



## ArCADia BIM LT

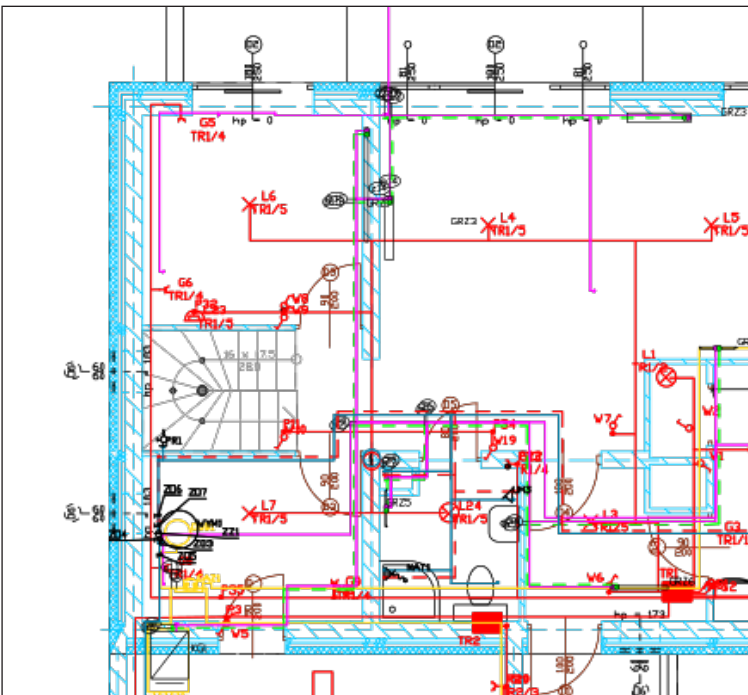
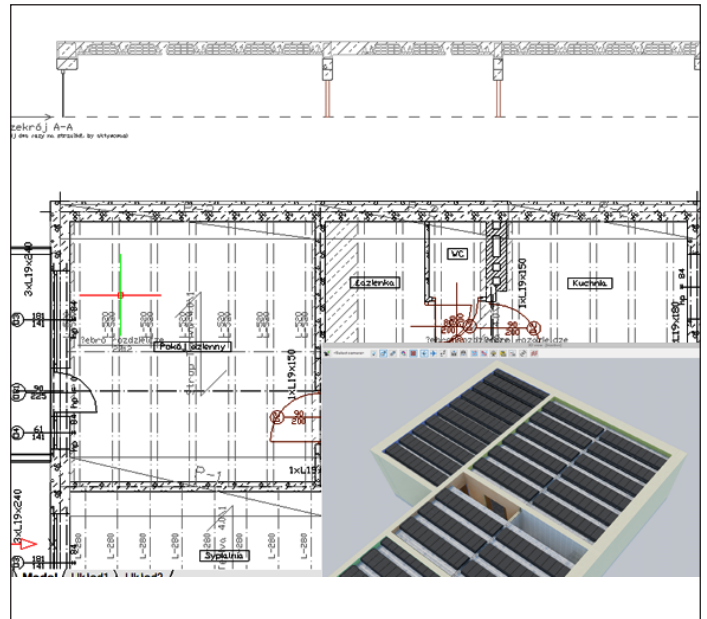
Work in a simple CAD environment and open up to BIM technology.

Object-oriented 2D drawing,  
fast documentation creation.

ArCADia BIM LT is a fully functional, easy-to-operate and intuitive CAD program that allows object-oriented creation of 2D building documentation and saving files to the 2013 DWG format.

ArCADia BIM LT opens DWG 2018 format files by automatic conversion to version 2013.

It is a basic graphic design tool for the construction industry in its broadest sense. The LT version of the program has all the basic functions of the ArCADia BIM system.



### ArCADia BIM LT software FEATURES:

- Support BIM technology, object-oriented architectural design.
- Intelligent drawing with ready-made architectural elements: multilayer walls, stairs, bases, columns, chimneys, windows and doors.
- Comparing and merging documents.
- Automatic floor entry, additional support for Teriva floor design.
- Generating statements.
- Supporting the IFC format. A possibility to exchange design data with other programs.
- Full DWG/DXF support.

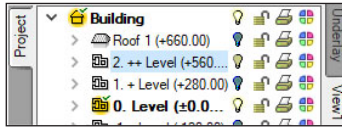
### Included FEATURES:

- BIM FEATURES
- BASIC DRAWING TOOLS

## BIM FEATURES

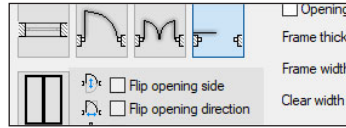
**BASIC TOOLS | ARCHITECTURE | CONSTRUCTION | WATER INSTALLATIONS | SEWAGE INSTALLATIONS | GAS INSTALLATIONS | HEATING INSTALLATIONS ELECTRICAL INSTALLATIONS | COMMUNICATION**

### BIM FEATURES - BASIC TOOLS



#### Project Manager tree

Managing views and the displayed information through the clear tree of the Project Manager.



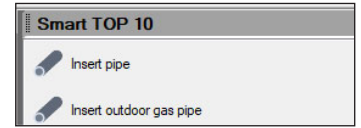
#### Walls, windows, doors

Inserting elements such as wall, pipe, etc. using the smart tracking function.



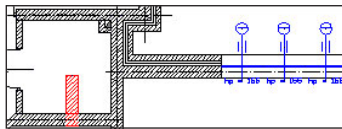
#### Visualization

Showing elements drawn in the view in a classic or the new 3D view rendered in real time (visualization using a 3D game engine).



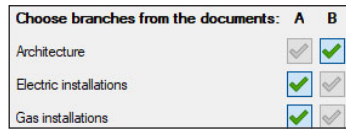
#### Smart TOP 10

A smart list of the most often used commands that are automatically memorized when working on a project, creating a personalized tool palette.



#### Comparing

The possibility to compare two versions of a project created as an ArcADia system model in the scope of new and modified system elements.



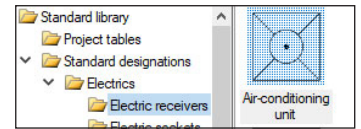
#### Merging

The possibility to merge the building model from an architectural design with the installation design models to create one complete model of a building project.



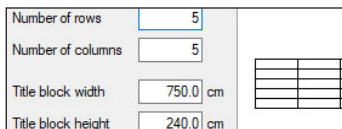
#### Collision

Collisions list of all or individual ArcADia system elements on a view, 3D view and a clear list.



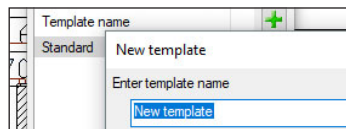
#### Library

Built-in library that allows for detailing with 2D symbols and 3D objects needed in the drawing.



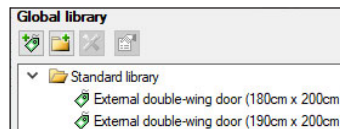
#### Drawing tables

Creating and inserting drawing tables with the option of saving them to the program library.



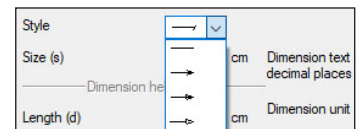
#### Custom setting

Saving custom settings for elements (pens, fonts, default element sizes, etc.) in the project template.



#### Elements

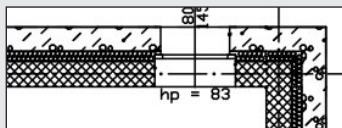
Built-in library of all elements types, with the possibility of expansion.



#### Dimensioning

Possibility of entering linear and angular dimensioning.

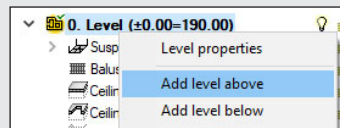
### BIM FEATURES - ARCHITECTURE



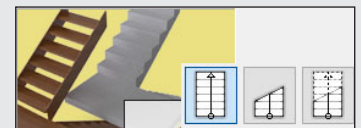
Choice of defined or drawing any multilayer wall. Built-in catalogue of construction materials.



Inserting of window and door woodwork in a parametric way. Inserting woodwork.



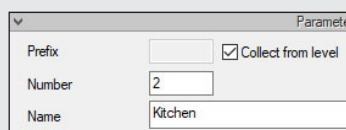
Automatic creation of rooms from the closed outlines of walls and virtual walls, assigning names, functions, temperature and lighting demand.



Defining one- and multi-flight stairs and winder stairs in any view.



Inserting an automatic roof on the closed external walls contour. Inserting of roof windows and dormer windows.



Creating a level with the possibility of copying selected elements.



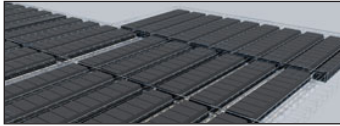
Inserting automatic ceilings on the closed external walls contour.

**>> MORE FUNCTIONS**

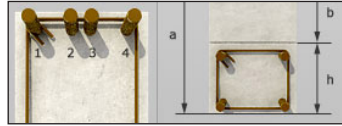
## BIM FEATURES

**BASIC TOOLS | ARCHITECTURE | CONSTRUCTION | WATER INSTALLATIONS | SEWAGE INSTALLATIONS | GAS INSTALLATIONS | HEATING INSTALLATIONS ELECTRICAL INSTALLATIONS | COMMUNICATION**

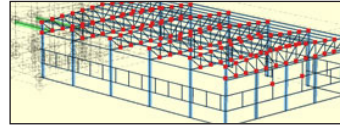
### BIM FEATURES - CONSTRUCTION



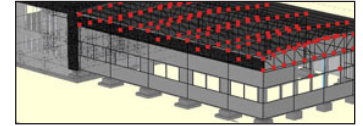
Constructing the structural systems of Teriva ribbed-beam roofs, containing all the basic elements of the system: ceiling beams, reinforcing ribs, hidden ribs, exchanges, supporting mesh and additionally all necessary material lists including the elements needed to make the ceiling, completed with reinforcing steel and monolithic concrete .



Inserting the binding joist with the insertion of longitudinal reinforcement and stirrups.



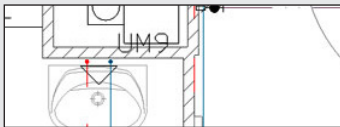
Transferring the location and the material as well as the bar cross-section to the construction view. Passing the remaining elements of the architectural model in the form of a rendered or translucent 3D view, and in the case of modular axes, bar elements and surface elements also in the form of their active underlay.



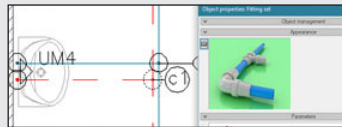
Automatic 3D construction view created on the basis of a three-dimensional architectural model of a building.

**>> MORE FUNCTIONS**

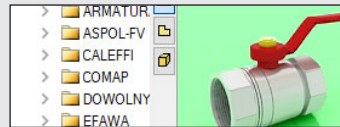
### BIM FEATURES - WATER SUPPLY INSTALLATIONS



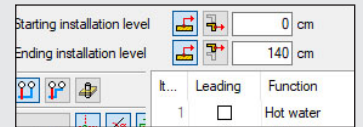
Drawings of the internal water supply system | connection point | water meter set | pipelines.



Automatic generation of connection fittings, creation of point numbering and installation description. Creating own templates.



Inserting fittings and devices from the manufacturers' library. Inserting devices with individually set shapes and dimensions defined by the user (eg DHW heaters). Inserting into the program library typical element systems.



Applying risers and distribution pipes from a library. It is possible to simultaneously run several parallel conduits with different functions and connect them intelligently. Drawing simplifications that allow you to change the level of many elements of the installation at the same time.

Q	PS1	Level 1	Incorrectly connected
Q	PS1	Level 1	Unconnected pipe
Q	PS1	Level 1	Incorrectly connected
Q	PS1	Level 1	Unconnected pipe

Checking the installation for connections correctness.

	Shut-off valve
	Sink faucet

Generating ready-made materials lists, devices and connection fittings included in the project.

**>> MORE FUNCTIONS**

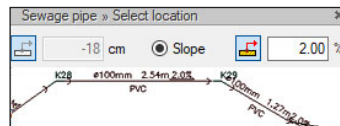
### BIM FEATURES - SEWAGE INSTALLATIONS



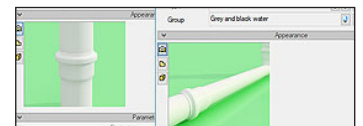
3D installation preview, which facilitates the correcting of irregularities in the pipeline route not shown on the view.

Item	Name	Unit	Quantity
1	Elbow 1° Polyethylene	pcs	1.00
2	Elbow 30° Polyethylene	pcs	1.00
3	Elbow 30° Polyethylene	pcs	1.00
4	Elbow 30° Polyethylene	pcs	1.00
5	Elbow 45° Polyethylene	pcs	1.00

Generating ready-made materials lists, devices and connection fittings included in the project.



Entering the pipeline route of the sewage system with a given slope on the view.



Pipelines with automatic distinction between outflow channels, risers and connecting pipes for accessories.

Installati...	Location Level	Description
Q	Level	Unconnected pipeline
Q	Level	Unconnected pipeline
Q	Level	Items unconnected to
Q	Level	Items unconnected to

Generating ready-made materials lists, devices and connection fittings included in the project.

Name
Three-way DN100 Elbow
Three-way 30 PVC DN100
Elbow 1 PVC DN100

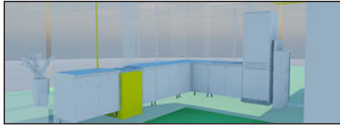
Checking the installation for connections correctness.

**>> MORE FUNCTIONS**

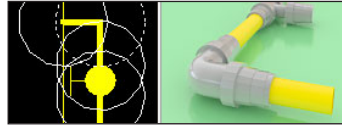
## BIM FEATURES

**BASIC TOOLS | ARCHITECTURE | CONSTRUCTION | WATER INSTALLATIONS | SEWAGE INSTALLATIONS | GAS INSTALLATIONS | HEATING INSTALLATIONS ELECTRICAL INSTALLATIONS | COMMUNICATION**

### BIM FEATURES - GAS INSTALLATIONS



Drawings of the internal gas installation.



Automatic generation of a set of connection fittings.

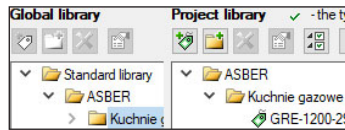
Gas installation item list

Drawing	Name	Marking	Count
	Gas valve, 3/2, 1/2", 1/2"	C	1 pc
	Gas meter, 3/2 1/2", 1/2"	B	1 pc
	Gas pipe, 1/2"	DB1	3 pc
	Gas valve, 3/2", 1/2"	VLV2	1 pc

Ready-made lists of materials and lists of elements.



Fittings and devices from the manufacturers' library.



Possibility to easily and quickly enter additional databases to the main library.

Installati...	Location	Description
	GB1	Ground floor
	GB1	Ground floor
		Ground floor
		Ground floor

Checking the installation for connection correctness.

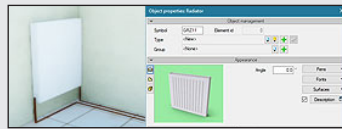
**>> MORE FUNCTIONS**

### BIM FEATURES - HEATING INSTALLATIONS

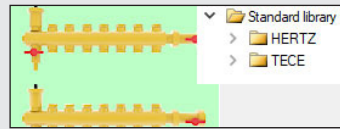
List of receivers at room

Room number	Room name	Room temperature [°C]	Receiver power [W]	Type/series of type
Level 2				
Ungrouped				
2	Bathroom	24.0	250	Series: LER1000
2	Room	22.0	750	Typ: 10
2	Room	22.0	900	Typ: 21
2	Room	22.0	2500	

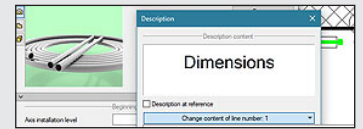
Ready-made materials lists, devices and connection fittings. Lists of receivers in rooms.



Heat receivers, i.e. panel, ribbed, bathroom and channel heaters, heating pipes, air heaters and fan-coil units.



Fittings and devices from the manufacturer's library.



Automatic creation of point numbering and installation descriptions. Creating own templates.



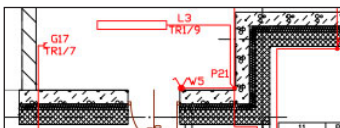
Inserting the fastening with the possibility of defining parameters characteristic for the fastening used.

Installati...	Location	Description
	KPS1	Level 0
		Level 0
		Level 0

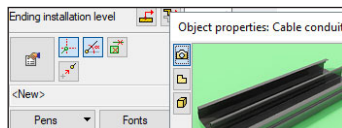
Checking the installation for connection correctness.

**>> MORE FUNCTIONS**

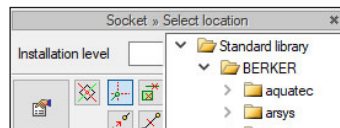
### BIM FEATURES - ELECTRICAL INSTALLATIONS



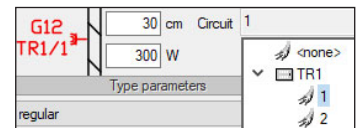
Drawing of internal electrical installations with distribution boards, sockets, connectors, boxes, lighting fixtures.



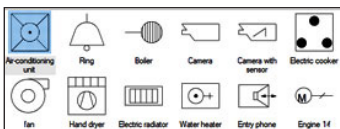
Designation of cable routes.



An extensive library of manufacturers catalogues of electrical installation elements.



Possibility to assign receivers to a particular distribution board (addressing).



Possibility to modify symbols of entered objects and assign receivers to a particular distribution board.

Electric installation material list

Item...	Name
Ungrouped	
1	Ceiling lamp, IP 20, 1x30W

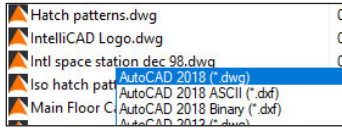
Generating a list of materials used in the project.

**>> MORE FUNCTIONS**

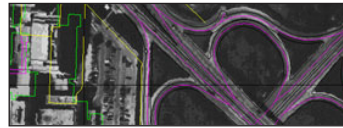
## BIM FEATURES

**BASIC TOOLS | ARCHITECTURE | CONSTRUCTION | WATER INSTALLATIONS | SEWAGE INSTALLATIONS | GAS INSTALLATIONS | HEATING INSTALLATIONS ELECTRICAL INSTALLATIONS | COMMUNICATION**

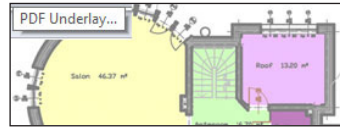
### BIM FEATURES - COMMUNICATION



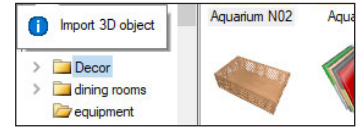
AutoCAD format from 2.5 to 2018 (DWG, DXF).



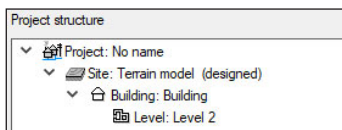
Importing/editing raster images files : JPG, TIF, BMP, PNG.



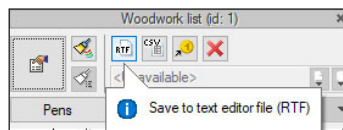
Import PDF files analogously to raster underlays or with conversion to vector elements. Export to PDF file.



Possibility to enlarge the library of 2D / 3D objects with the formats: XOBJECT, ACO, O2C, OBJ, XOBJ3D and DWG.



IFC file conversion into ArCADia's basic objects (walls, windows, doors, ceilings, roofs).

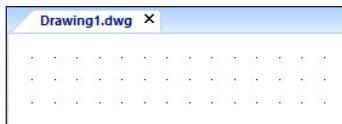


Export of material lists of elements included in the project to RTF, CSV and to the Ceninwest program.)

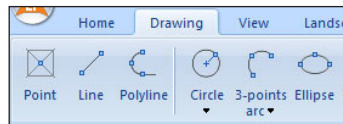
## DRAWING TOOLS

An extended CAD drawing engine

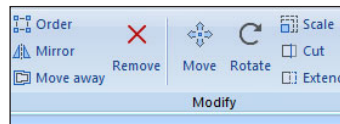
### BASIC DRAWING TOOLS



The program window is divided into tabs in which the drawings are successively displayed.



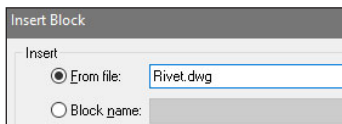
Creating any drawings using basic elements: lines, polylines, circles, arcs, ellipses, regular polygons and rectangles.



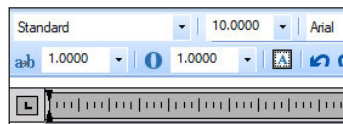
Editing drawing elements: moving, copying, scaling, rotating, mirroring, ordering, cutting, breaking, and offset.



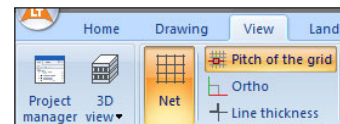
Functions allowing for any hatching of a closed contour of a circle, polygon and rectangle.



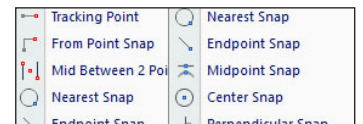
Simplified block creation and saving. Loading a block from an external file.



Describing a drawing with multiline text using SHX technical fonts or TrueType fonts.



Auxiliary grid, orthogonal drawing functions, polar tracking.



Recognition of snap points (ESNAP), e.g. for lines - center, end points and intersections of lines.



Intuitive way of defining the size of the sheet and the scale of the printed drawing.